

[Home](#) > [Products](#) > Level

## Level

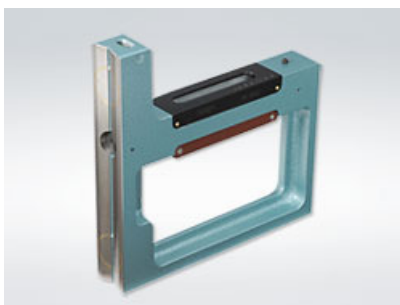
### Magnet Type Precision Square Level



●A powerful magnet is included in the perpendicular plane of the main body.  
And it is easy to measure of the vertical direction.

Item Code	Size	Sensitivity (mm/1m)	Net Weight (kg)
R-MSL1502		0.02	
R-MSL1505	150	0.05	3
R-MSL1510		0.1	
R-MSL2002		0.02	
R-MSL2005	200	0.05	4.5
R-MSL2010		0.1	
R-MSL2502		0.02	
R-MSL2505	250	0.05	5.5
R-MSL2510		0.1	

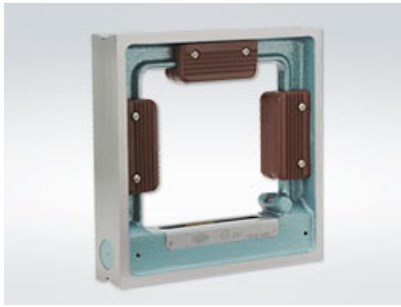
### Magnet Type Precision Square h-Level



●A powerful magnet is included in the perpendicular plane of the main body.  
(There are no ON/OFF function of the magnet)

Item Code	Size	Sensitivity (mm/1m)	Net Weight (kg)
RHL-1502		0.02	
RHL-1505	150	0.05	2.2
RHL-2002		0.02	
RHL-2005	200	0.05	3.3

### Precision Square Level AA Class

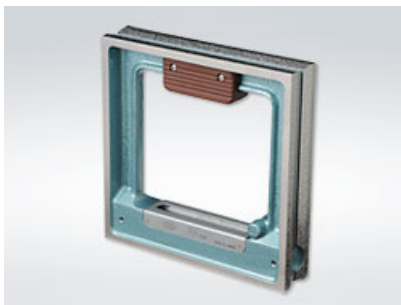


- The accuracy of AA class is more than JIS B 7510 A-class. (There are bubble room in bubble pipe)
- Please use this precision level for the measurement of squareness, flatness, inspection and assembly in high precision.

Item Code	Size	Sensitivity (mm/1m)	Net Weight (kg)
RSL-AA1502	150	0.02	3
RSL-AA1505		0.05	
RSL-AA2002		0.02	
RSL-AA2005	200	0.05	4.5
RSL-AA2010		0.1	
RSL-AA2502		0.02	
RSL-AA2505	250	0.05	7.5
RSL-AA2510		0.1	
RSL-AA3002		0.02	
RSL-AA3005	300	0.05	10.5
RSL-AA3010		0.1	

---

#### Precision Square Level A Class



- This precision level is manufactured according to JIS B 7510 A class. (There are bubble room in bubble pipe)

Item Code	Size	Sensitivity (mm/1m)	Net Weight (kg)
RSL-A1502	150	0.02	3
RSL-A1505		0.05	
RSL-A1510		0.1	
RSL-A2002	200	0.02	4.5
RSL-A2005		0.05	
RSL-A2010		0.1	
RSL-A2502	250	0.02	7.5
RSL-A2505		0.05	
RSL-A2510		0.1	
RSL-A3002	300	0.02	10.5
RSL-A3005		0.05	
RSL-A3010		0.1	

---

#### Precision Flat Level AA Class



- The accuracy of this AA class is more than JIS B 7510 A-class. (There are bubble room in bubble pipe)
- Please use this precision level for the measurement of squareness, flatness, inspection and assembly in high precision.

Item Code	Size	Sensitivity (mm/1m)	Net Weight (kg)
RFL-AA1502	150	0.02	1.6
RFL-AA1505		0.05	
RFL-AA2002		0.02	
RFL-AA2005	200	0.05	2.3
RFL-AA2010		0.1	
RFL-AA2502		0.02	
RFL-AA2505	250	0.05	3
RFL-AA2510		0.1	
RFL-AA3002	300	0.02	3.7
RFL-AA3005		0.05	
RFL-AA3010		0.1	

---

#### Precision Flat Level A Class

---



- This precision level is manufactured according to JIS B 7510 A class. (There are bubble room in bubble pipe)

Item Code	Size	Sensitivity (mm/1m)	Net Weight (kg)
RFL-A1502	150	0.02	1.6
RFL-A1505		0.05	
RFL-A1510		0.1	
RFL-A2002	200	0.02	2.3
RFL-A2005		0.05	
RFL-A2010		0.1	
RFL-A2502	250	0.02	3
RFL-A2505		0.05	
RFL-A2510		0.1	
RFL-A3002	300	0.02	3.7
RFL-A3005		0.05	
RFL-A3010		0.1	

---

#### Precision Portable Flat Level A Class

---



- This precision level is manufactured according to JIS B 7510 A class. (There are bubble room in bubble pipe)
- It is very convenient for carrying and carrying around.

Item Code	Material	Sensitivity (mm/1m)	Net Weight (kg)
RKF-A1002	Hard Steel Base	0.02	0.8
RKF-A1005		0.05	
RKF-A1002S	Stone Base	0.02	0.8
RKF-A1005S		0.05	

### Precision Square Level



- This precision level is manufactured according to our RIKEN's standard. (There are no bubble room)
- Please use this precision level for machine assembly, machine installation and centering.

Item Code	Size	Sensitivity (mm/1m)	Net Weight (kg)
RSL-1002	100	0.02	2
RSL-1005		0.05	
RSL-1010		0.1	
RSL-1502	150	0.02	2.6
RSL-1505		0.05	
RSL-1510		0.1	
RSL-2002	200	0.02	4
RSL-2005		0.05	
RSL-2010		0.1	
RSL-2502	250	0.02	7
RSL-2505		0.05	
RSL-2510		0.1	
RSL-3002	300	0.02	9.3
RSL-3005		0.05	
RSL-3010		0.1	

### Precision Flat Level



- This precision level is manufactured according to our RIKEN's standard. (There are no bubble room)
- Please use this precision level for machine assembly, machine installation and centering.

Item Code	Size	Sensitivity (mm/1m)	Net Weight (kg)
RFL-1002		0.02	
RFL-1005	100	0.05	0.8
RFL-1010		0.1	
RFL-1502		0.02	
RFL-1505	150	0.05	1.8
RFL-1510		0.1	
RFL-2002		0.02	
RFL-2005	200	0.05	2.3
RFL-2010		0.1	
RFL-2502		0.02	
RFL-2505	250	0.05	2.9
RFL-2510		0.1	
RFL-3002		0.02	
RFL-3005	300	0.05	3.5
RFL-3010		0.1	

---

### Adjustable Bench Level

---



- It is easy to look very much because upper bubble pipe is not covered.

Item Code	Size	Sensitivity (mm/1m)	Net Weight (kg)
RBL-1505	150	0.05	1.2
RBL-1510		0.1	
RBL-2005	200	0.05	1.5
RBL-2010		0.1	
RBL-2505	250	0.05	2.1
RBL-2510		0.1	
RBL-3005	300	0.05	2.5
RBL-3010		0.1	

---

### Incline Precision Level

---



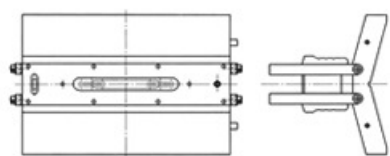
- Please use this level for angle measurement.

Item Code	Overall Length (mm)	Sensitivity (mm/200mm)	Net Weight (kg)
RML-2001	230	0.01	2.2
RML-2002		0.02	

---

 Saddle Type Precision Level
 

---



● This level can be measured the straightness of big diameter's workpiece such a roll and pipe.

---

 Round Level
 

---



● Measurement of the flatness of all directions can be performed easily.

Item Code	Type	Outside Dia x Brim Dia x Height (mm)	Net Weight (g)
RRL1828		φ18xφ28x14	28
RRL2030	with brim	φ20xφ30x15	37
RRL2435		φ24xφ35x18	60
RRL2538		φ25xφ38x18	72
RRL2020	without brim	φ20x20	30
RRL2420		φ24x20	39

---

 Cross Test Level
 

---



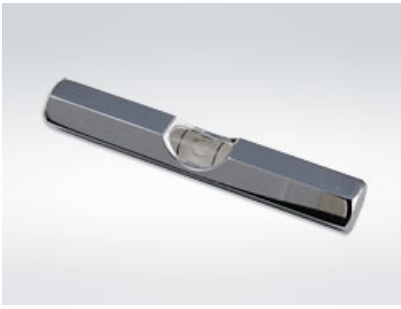
● Cross test level can be measured flatness easily.

Item Code	Height x Length x Width x Thickness (mm)	Net Weight (kg)
R-CTL7550	75x50x19x15	0.2

---

 Pocket Level
 

---



●Pocket level is compact and light weight, and it can be measured.

Item Code	Overall Length x Hexagon Oposite Distance (mm)	Net Weight (g)
RPL65	65x10	29
RPL90	90x12	52

Copyright (C) RIKEN KEISOKUKI MFG.CO.,LTD. All rights reserved.